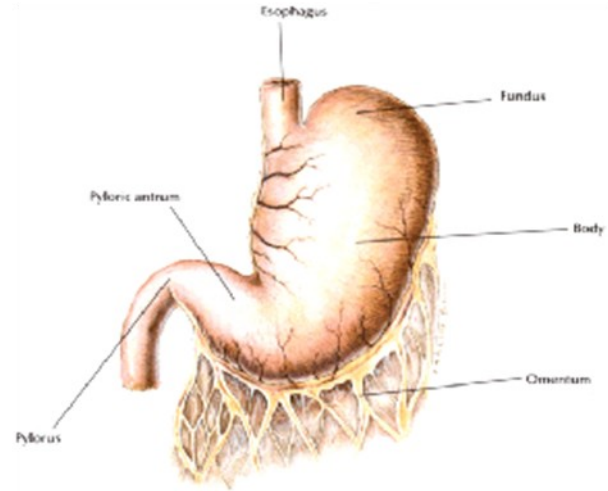


The best care *when you need it most*

- * Gastric dilation–volvulus (GDV), or “bloat,” is a life-threatening condition in which the stomach fills with air and becomes twisted.
- * GDV can occur in any breed of dog, but it is more commonly seen in larger-breed dogs with deep chests.
- * Dogs weighing 100 pounds or more have a 20% chance of this condition.



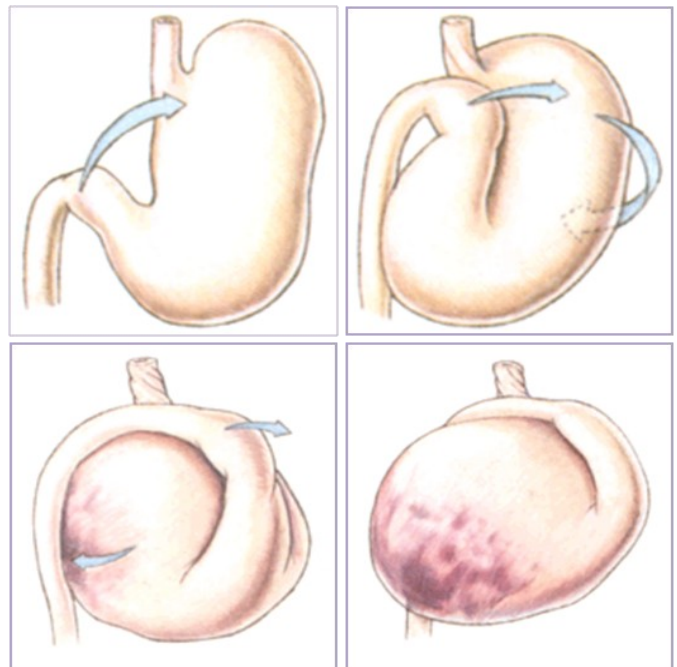
The normal stomach

In the bloated stomach, gas and/or food stretches the stomach many times its normal size, causing tremendous abdominal pain. For reasons we do not fully understand, this grossly distended stomach has a tendency to rotate, thus twisting off not only its own blood supply but the only exit routes for the gas inside.

What Is It?

Gastric dilation–volvulus (GDV), or “bloat,” is a life-threatening condition in which a dog’s stomach fills with air and becomes twisted. Gas builds up in the twisted stomach and stretches it. This stretching, also called distention, is extremely painful and limits the amount of blood that can reach other parts of the body. When blood can’t reach body tissues to supply oxygen, those tissues can die. GDV is an emergency situation, and if not treated immediately, it can be fatal. While any size or breed of dog can develop this condition, it is more common in larger-breed dogs with deep chests, like German shepherds, golden retrievers, and Great Danes.

The normal stomach sits high in the abdomen and contains a small amount of gas, some mucus, and any food being digested. It undergoes a normal rhythm of contraction, receiving food from the esophagus above, grinding the food, and meting the ground food out to the small intestine at its other end. Normally this proceeds uneventfully except for the occasional burp.





Burlington Emergency & Veterinary Specialists

The best care *when you need it most*

Gastric Dilatation–Volvulus

Not only is this condition extremely painful but it is also rapidly life-threatening. A dog with a bloated, twisted stomach (more scientifically called gastric dilatation and volvulus) will die in pain in a matter of hours unless drastic steps are taken.

Signs of Gastric Dilatation–Volvulus

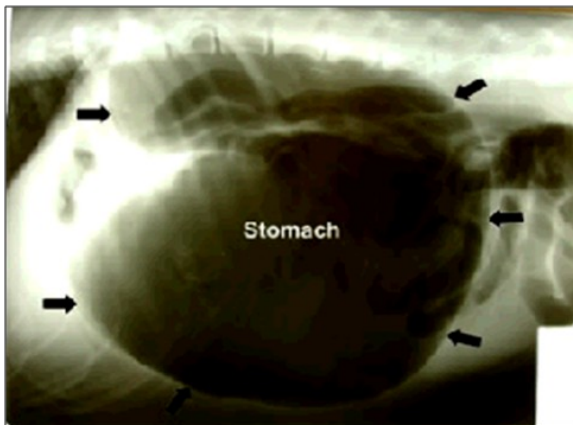
A dog with GDV may be found collapsed and in severe pain. The dog may try unsuccessfully to vomit and may have a very swollen belly. Dogs with GDV are in extreme pain, so they may whine, grunt, appear distressed, or stand with an arched back. Other signs include:

- Drooling, Frequent retching, Anxiousness, restlessness, pacing, Lethargy (tiredness), Depression, Vocalizing (sign of pain)
- Arched back (sign of pain)

Diagnosis

GDV is usually diagnosed based on a combination of physical examination findings and radiographs (x-rays). A dog with GDV will have an enlarged abdominal area that is painful to the slightest touch. Your veterinarian will also look for signs of shock, such as weakness, pale gums, and severe depression.

Your veterinarian may take abdominal x-rays to evaluate the position of the stomach. On the x-ray, the stomach will appear full of gas and in an unusual position. X-rays are normally taken only after the patient is stabilized. The longer the pet is in distress, the more likely it is to die or have complications.



Radiograph showing typical gas distension of the stomach in a case of bloat

Treatment

GDV is an emergency condition and must be treated by a veterinarian immediately. At the hospital, the veterinarian will take steps to gently decompress the stomach and relieve the bloating. Dogs with GDV may be in shock and great pain. The veterinary team will make every effort to stabilize the patient as much as possible. This may include intravenous fluids and pain medication. The patient may require emergency surgery to correct the twisted stomach and check for any internal damage. Sometimes, the twisting of the stomach damages the spleen, intestines, and other nearby organs.

Once the dog's stomach is untwisted and repaired, the surgeon usually performs a surgical procedure called a **gastropexy**. In this surgery, the stomach is returned to its normal position and attached to the inside of the abdominal wall, which helps prevent it from twisting again. A gastropexy is very important, since the chance of GDV happening again is extremely high. Without gastropexy, the recurrence rate of bloat may be as high as 75%.

Prevention

In breeds with a high risk of GDV, veterinarians often recommend performing gastropexy as a preventive measure. A surgeon may perform this surgery when the dog is being spayed or neutered as a puppy. Recent advances in surgery have allowed veterinarians to perform this surgery through laparoscopy. A laparoscope is a surgical device attached to a long tube (called an endoscope) that has a tiny camera at the tip. This device is inserted into the patient's abdomen through a very small incision, and the entire gastropexy procedure can be performed using this technology. Laparoscopy has been associated with a faster recovery time than conventional surgery.

GDV can be caused by an abdominal tumor that changes the position of the stomach. In some cases, it can also occur soon after a dog has heavy exercise after eating a large meal. To help prevent GDV, you should feed smaller, more frequent meals and restrict exercise for a period of time after eating.

From:

<https://www.vetlearn.com/>

THE PET HEALTH LIBRARY

By Wendy C. Brooks, DVM, DipABVP

Educational Director, VeterinaryPartner.com